



a world class African city



City of Johannesburg  
Johannesburg Roads Agency

75 Helen Joseph Street  
Cnr. Harrison Street  
Johannesburg  
2001

P/Bag X70  
Braamfontein  
South Africa  
2017

Tel +27(0) 11 298 5000  
Fax +27(0) 11 298 5178  
[www.jra.org.za](http://www.jra.org.za)  
[www.joburg.org.za](http://www.joburg.org.za)

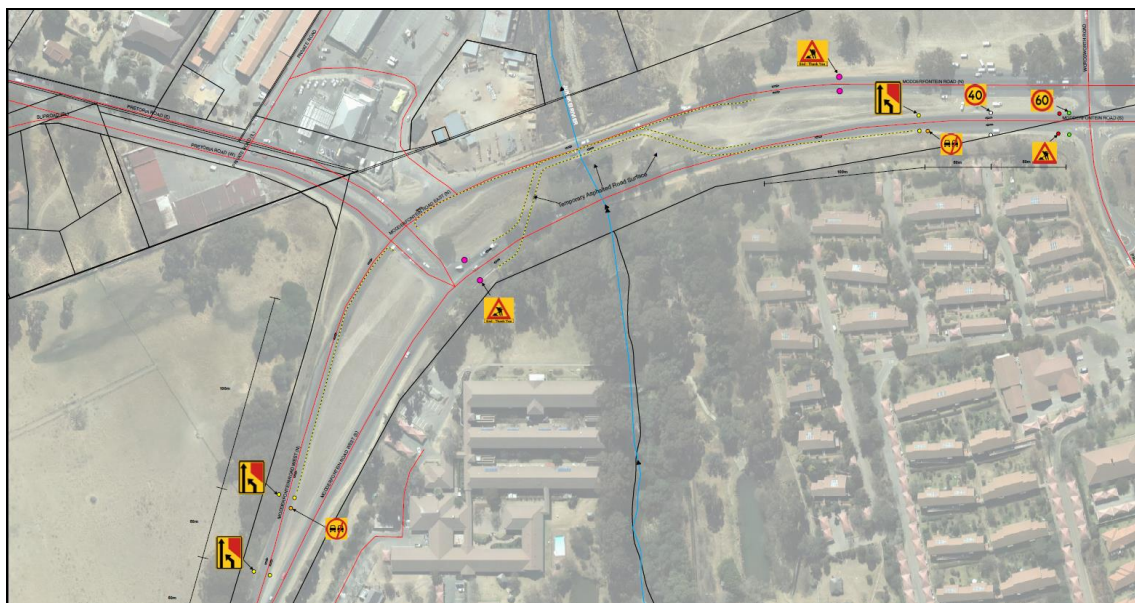
## TRAFFIC ADVISORY

**Date: 23 January 2024**  
**For immediate release**

### **Modderfontein Road in Ward 32 Remains Closed on Northern Carriageway Due to Ongoing Bridge Rehabilitation Works**

The Johannesburg Roads Agency (JRA) reiterates that the partial closure of the Modderfontein Road bridge, between Pretoria Road (West) and Wordsworth Road, will remain in place until the completion of the rehabilitation works on the northern carriageway. In the interim, the southern carriageway is open to accommodate counterflow traffic.

Modderfontein Road is a major arterial road which links Johannesburg (Region E) and Ekurhuleni and experiences high traffic volumes during peak times. Rehabilitation works are being undertaken to widen the culvert along the stream which will prevent the overtopping of the Jukskei river onto the bridge deck and ensure the overall structural integrity of the bridge. The rehabilitation project is being undertaken into two phases to reduce the impact to traffic, the first phase remedial works on the southern carriageway were completed in July 2023.



**Above: Aerial Picture of Modderfontein Road showing the implemented closure and traffic diversion route**

JRA has noted with great concern, the illegal removal of road closure barriers on the northern carriageway aimed at safeguarding road users. The public is strongly urged to refrain from tampering with the barriers

Chairman: E Botha  
Executive Directors - Chief Executive Officer: Vacant  
Non-Executive Directors: A Francis, Dr. R Govender, K Mofokeng, V Mamogobo, S Kleinbooi, S Mtamzeli, C Lourens, T Goldsmith, D Nyamazane, Z Xaba, B Nimmerhoudt  
Company Secretary: P Majola

Registration No. 2000/028993/30

and entering the construction site. The closure on the northern carriageway was implemented after assessments indicated that this section of the bridge and road is not structurally safe for vehicular traffic.

Unauthorised removal of road barriers and signage is in contravention of **section 57 (12) of the National Road Traffic Act**, which states that “*no person shall willfully or negligently damage any road traffic sign, or any other sign, signal, marking or other device, or without proper authority to remove it or alter the position thereof or the inscription, lettering, colour or marking thereof or thereon.*” This is also applicable to temporary road traffic signs and barricades used to demarcate roadworks sites as prescribed in the South African Road Traffic Signs Manual.

The abovementioned safety measures are in place to protect everyone by indicating potential hazards, lane or road closures, and changes in traffic flow. By removing or ignoring these signs, motorists risk accidents and collisions, injury to construction workers, increase traffic congestion and legal consequences.

Additionally, motorists are urged to exercise caution and patience when travelling on Modderfontein Road, as well as to adhere to all road signage placed ahead of the construction site.

JRA will provide progress updates in due course on the second phase of the project earmarked to be undertaken in the 2023/24 financial year.

---

ENDS

---

#### **About the Johannesburg Roads Agency (JRA)**

The JRA is a City-owned agency responsible for the maintenance, repair and development of Johannesburg’s road network and storm water infrastructure, including bridges and culverts, traffic signals and signage. The organisation is committed to providing quality roads that are accessible, safe and liveable for our communities. ***Stay in touch with JRA via 0860 562 874/ [hotline@jra.org.za](mailto:hotline@jra.org.za) /twitter @MyJra /Facebook: Johannesburg Roads Agency so that we may be of service.***

#### **Issued by:**

Public Relations & Stakeholder Engagement Department  
Johannesburg Roads Agency

#### **Media Enquiries:**

Bertha Peters-Scheepers  
Tel: 011 298 5171 / 079 510 4186  
Email: [bscheepers@jra.org.za](mailto:bscheepers@jra.org.za) / [mediaqueries@jra.org.za](mailto:mediaqueries@jra.org.za)