



a world class African city



City of Johannesburg  
Johannesburg Roads Agency

75 Helen Joseph Street  
Cnr. Harrison Street  
Johannesburg  
2001

P/Bag X70  
Braamfontein  
South Africa  
2017

Tel +27(0) 11 298 5000  
Fax +27(0) 11 298 5178  
[www.jra.org.za](http://www.jra.org.za)  
[www.joburg.org.za](http://www.joburg.org.za)

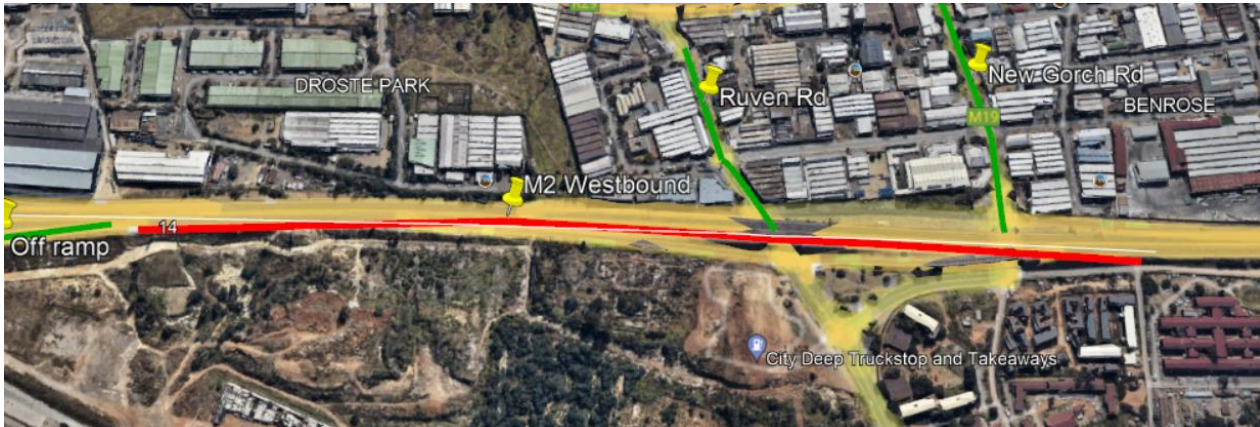
## JRA commits over R12 million towards resurfacing M2 Motorway by end of June

Johannesburg Roads Agency (**JRA**) has committed **over R12 million** towards the **resurfacing of the M2 Motorway**. The three-pronged project which entails the resurfacing of the M2 Motorway Eastbound, Cleveland off-ramp and on-ramp and M2 Motorway Westbound from New Gorch Road to Maritzburg off-ramp south of the Johannesburg Central Business District (CBD) is scheduled to be completed by 30 June 2022. The section of the M2 Motorway where the aforementioned road works will be conducted is located in the Cleveland suburb of Johannesburg in Region F.



*An aerial view of the M2 Motorway Eastbound, Cleveland off-ramp and on-ramp*

The **three undertakings** form part of the **JRA Integrated Development Plan (IDP)** and are also aligned to the City of Johannesburg (COJ) Mayoral Priority 1 which is intended to promote economic development through attracting investments that are **envisaged to contribute 5% economic growth** to the City's economy. The identified routes were prioritised by the JRA's Road Asset Management System (RAMS) Planning Department after rigorous consultations with Regional Operations Depot Managers and other critical stakeholders as per the JRA's Strategic Pillar Guidelines aimed at ensuring the assurance of services to the public.



*An aerial view of the M2 Motorway Westbound from New Gorch Road to Maritzburg off-ramp*

**The resurfacing of the roads will entail the following activities:**

1. Milling out 120mm of the surfacing on all poor condition sections which will involve the verification of the milling depth during construction in line with the approved budget.
2. Repairing localised pavement failures and crack sealing.
3. Inlaying milled sections with 80mm Bitumen Treated Base (BTB)
4. Overlaying 40mm asphalt throughout the road.
5. Road marking.



*An example of some of the road works currently underway at the M2 Motorway Project*

Upon conclusion of the project, a total number of 5.60 lane kilometre of roads would have been resurfaced. It should be noted that the project's scope doesn't include kerbs, permanent road signs, sidewalks and drains.