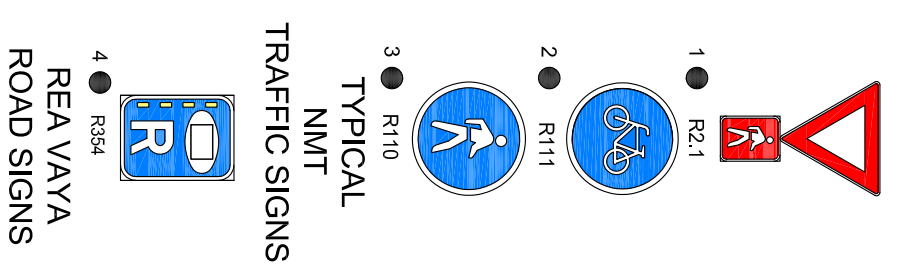
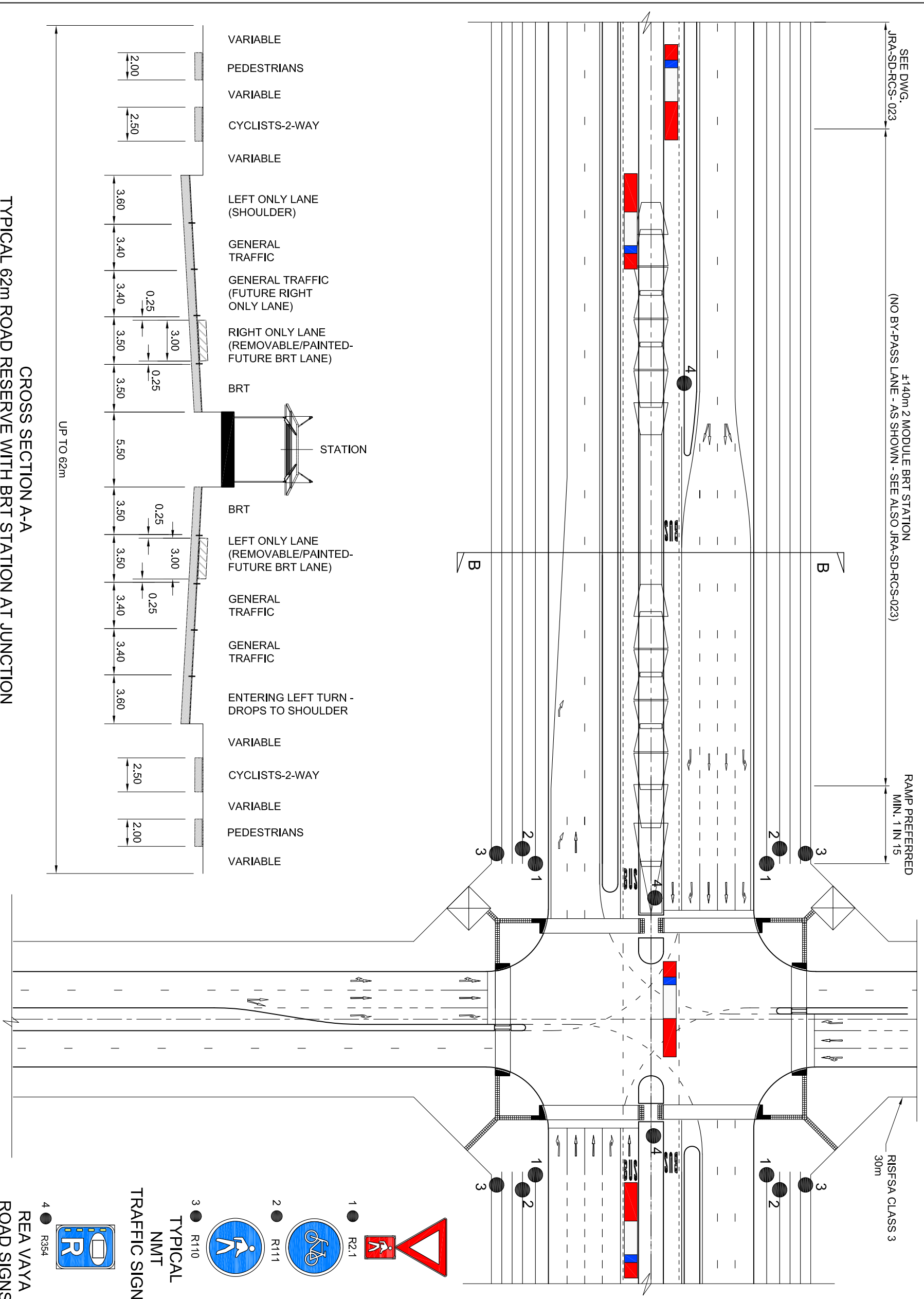


SEE DWG. JRA-SD-RCS-023  
(NO BY-PASS LANE - AS SHOWN - SEE ALSO JRA-SD-RCS-023)

±140m 2 MODULE BRT STATION  
RAMP PREFERRED  
MIN. 1 IN 15



TYPICAL NMT TRAFFIC SIGNS

REA VAYA ROAD SIGNS

LEGEND

- TACTILE PAVING
- RAMP DOWN IN DIRECTION OF ARROW - MAX. 1 IN 15
- REPRESENTS THE WORD BUS IN YELLOW (RM17.2).
- OPTIONAL BICYCLE STORAGE.
- PROPERTY BOUNDARIES

Details on this drawing are subject to operational assessment with respect to traffic signal provision

NOTES

1. A DETAIL OF THIS NATURE SHOULD BE CONSIDERED AS ILLUSTRATIVE. ACTUAL LANE CONFIGURATIONS WILL BE DICTATED BY PUBLIC TRANSPORT POLICY AND GENERAL TRAFFIC DEMAND RESULTING FROM THE IMPLEMENTATION OF SUCH POLICY. REFER ALSO TO DWGS JRA-SD-RCS-022 AND 023.
2. THE FULL DEVELOPMENT OF A RISFSA CLASS 2 ROAD IN A 62m RESERVE IS SHOWN.
3. REMOVABLE ISLANDS ARE SHOWN ON THE LINE OF FUTURE BRT BY-PASS LANES. THESE MAY ALTERNATIVELY BE PROVIDED AS PAINTED ISLANDS.
4. DRAWING JRA-SD-RCS-022 SHOWS A TYPICAL MID-BLOCK BRT STATION WITH BY-PASS LANES (50m ROAD RESERVE). IF BRT BY-PASS LANES ARE PROVIDED IN FUTURE THE GENERAL TRAFFIC RIGHT TURN ONLY LANES WILL MOVE TO THE LEFT. THESE LANES MAY THEN REQUIRE BLOCKING ISLANDS ON THE FAR SIDE OF THE JUNCTION. SUCH TREATMENT WILL RESULT IN A SUBSEQUENT LANESHIFT TO THE RIGHT BEYOND THE JUNCTION.
6. NOTE: TACTILES SHOULD ONLY BE PLACED ON MEDIANS WHERE PEDESTRIANS ARE EXPECTED TO STOP AND REASSESS THE NEXT PHASE OF THE CROSSING. IF THERE IS ONLY ONE PEDESTRIAN PHASE WHERE THE PEDESTRIAN IS EXPECTED TO CROSS THE FULL WIDTH OF THE ROAD IN ONE CROSSING, NO TACTILES SHOULD BE PLACED ON THE MEDIAN.

AMENDMENTS	
No.	DATE
1.	01-06-2017
	APPROVED
	DESCRIPTION
	Tactile Layout update

DESIGNED BY:	DRAWN BY:
STRUCTURAL DESIGN BY:	DRAWING CHECKED BY:
CHECKED BY:	DRAWING APPROVED BY:



CITY OF JOHANNESBURG  
JOHANNESBURG ROADS AGENCY (PTY) LTD  
Drawing Sub-set  
ROADS: COMPLETE STREETS  
RISFSA CLASS 2: ARTERIAL/REGIONAL DISTRICT DISTRIBUTOR  
TYPICAL INTERSECTION WITH BRT STATION

SCALE AS SHOWN: NTS	DATE: 04/07/2017
DRAWING NUMBER	EXTN.
JRA-SD RCS-021	
AMENDMENT NUMBER: 01	